

**CHICAGO FAUCETS**  
a Geberit company

2100 South Clearwater Drive  
Des Plaines, IL 60018  
Phone: 847-803-5000  
Fax: 847-803-5454  
www.chicagofaucets.com

**REPAIR PARTS**

FITTING NO.

**526-919SLCP**

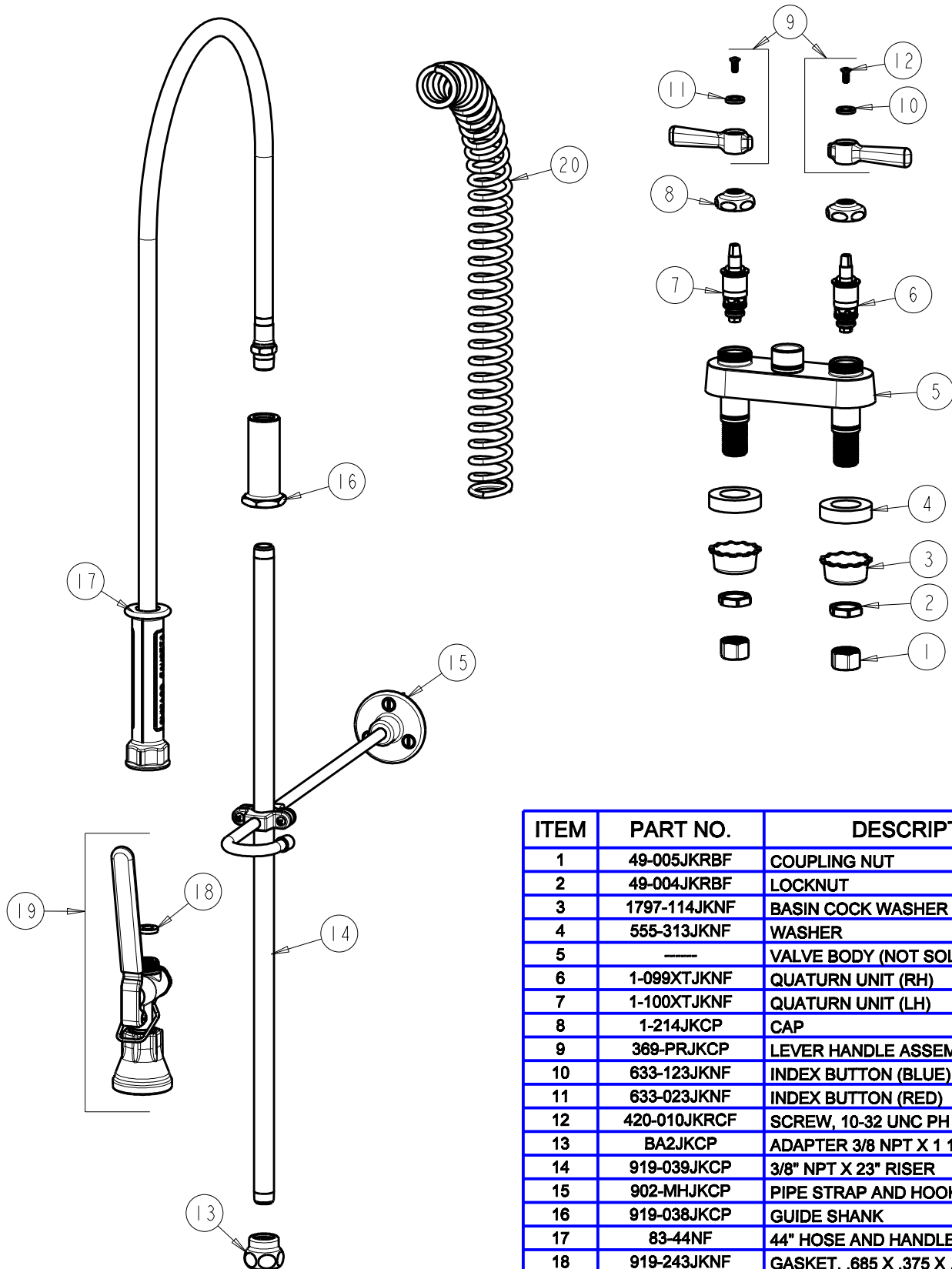
SUBMITTED MODEL NO.

ITEM NO.

BY: JAR DATE: 03-02-10

CHK: *[Signature]* REV: 05-17-11

**FOR TECHNICAL ASSISTANCE**  
1-800-TEC-TRUE (1-800-832-8783)



ITEM	PART NO.	DESCRIPTION
1	49-005JKRBF	COUPLING NUT
2	49-004JKRBF	LOCKNUT
3	1797-114JKNF	BASIN COCK WASHER
4	555-313JKNF	WASHER
5	---	VALVE BODY (NOT SOLD SEPARATELY)
6	1-099XTJKNF	QUATURN UNIT (RH)
7	1-100XTJKNF	QUATURN UNIT (LH)
8	1-214JKCP	CAP
9	369-PRJKCP	LEVER HANDLE ASSEMBLY (PAIR)
10	633-123JKNF	INDEX BUTTON (BLUE)
11	633-023JKNF	INDEX BUTTON (RED)
12	420-010JKRCF	SCREW, 10-32 UNC PH 1/2
13	BA2JKCP	ADAPTER 3/8 NPT X 1 1/16-18 UNEF
14	919-039JKCP	3/8" NPT X 23" RISER
15	902-MHJKCP	PIPE STRAP AND HOOK ASSEMBLY
16	919-038JKCP	GUIDE SHANK
17	83-44NF	44" HOSE AND HANDLE ASSEMBLY
18	919-243JKNF	GASKET, .685 X .375 X .125
19	90-LABCP	PRE-RINSE VALVE, LOW FLOW
20	919-014JKCP	SPRING