

**CHICAGO
FAUCETS** 

a Geberit company

2100 South Clearwater Drive
Des Plaines, IL 60018
Phone: 847-803-5000
Fax: 847-803-5454
www.chicagofaucets.com

REPAIR PARTS

BY: JAR DATE: 10-02-02

CHK:  REV: 11-16-11

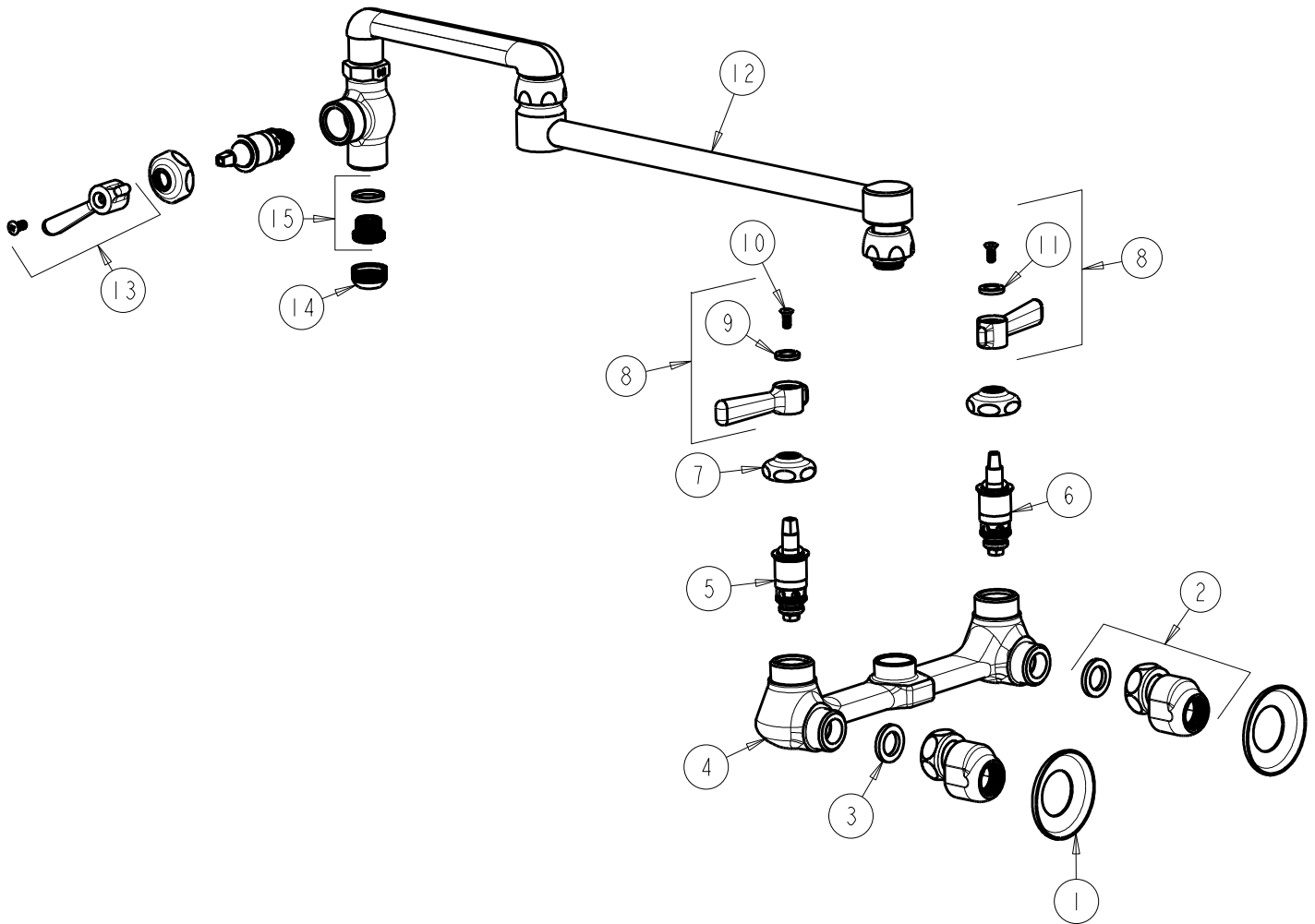
FITTING NO.

517-GCCP

SUBMITTED MODEL NO.

ITEM NO.

FOR TECHNICAL ASSISTANCE
1-800-TEC-TRUE (1-800-832-8783)



ITEM	PART NO.	DESCRIPTION
1	1-055JKCP	FLANGE
2	GCJKABCP	ARM ASSEMBLY 'GC' WITH WASHER
3	1-011JKNF	WASHER, .97 X .62 X .12
4	---	VALVE BODY (NOT SOLD SEPARATELY)
5	1-099XTJKNF	QUATURN CARTRIDGE (RH)
6	1-100XTJKNF	QUATURN CARTRIDGE (LH)
7	1-214JKCP	CAP
8	369-PRJKCP	LEVER HANDLE ASSEMBLY (PAIR)
9	633-123JKNF	INDEX BUTTON (BLUE)
10	420-010JKRCF	SCREW, 10-32 UNC PH 1/2
11	633-023JKNF	INDEX BUTTON (RED)
12	---	SPOUT (NOT SOLD SEPARATELY)
13	269-JKNF	HEAT RESISTANT LEVER HANDLE
14	E1JKRCF	QUIXTOP OUTLET
15	K2JKRCF	ADAPTER W/ WASHER