

CHICAGO FAUCETS
a Geberit company

2100 South Clearwater Drive
Des Plaines, IL 60018
Phone: 847-803-5000
Fax: 847-803-5454
www.chicagofaucets.com

REPAIR PARTS

FITTING NO.

512-GCCP

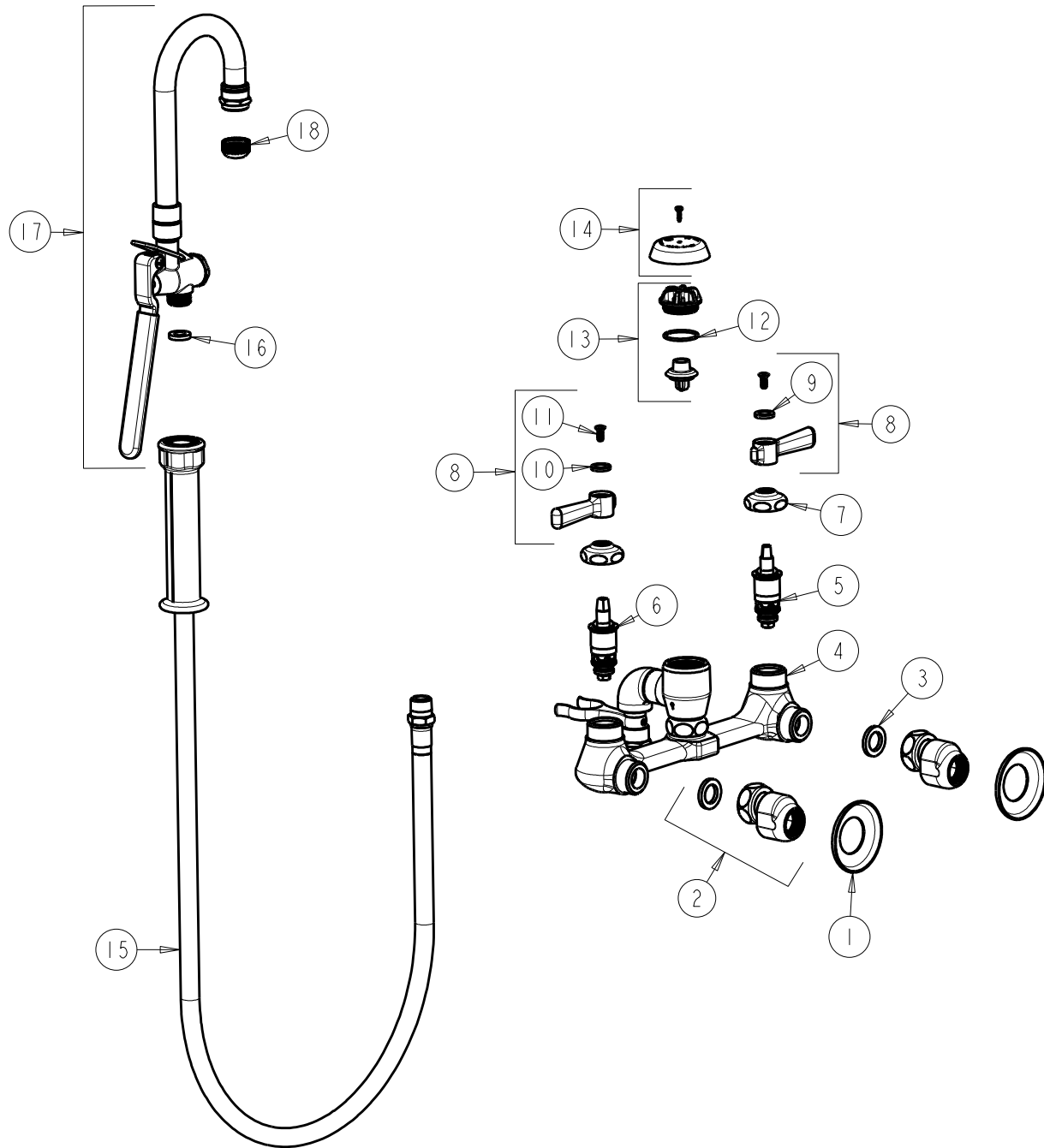
SUBMITTED MODEL NO.

ITEM NO.

BY: JAR DATE: 03-12-02

CHK: *[Signature]* REV: 11-18-11

FOR TECHNICAL ASSISTANCE
1-800-TEC-TRUE (1-800-832-8783)



ITEM	PART NO.	DESCRIPTION	ITEM	PART NO.	DESCRIPTION
1	1-055JKCP	FLANGE	11	420-010JKRCF	SCREW, 10-32 UNC PH 1/2
2	GCJKABCP	ARM ASSEMBLY 'GC' WITH WASHER	12	80-007JKNF	O RING 0.989 X .070
3	1-011JKNF	WASHER, .97 X .62 X .12	13	892-302KJKNF	VACUUM BREAKER REPAIR KIT
4	---	VALVE BODY (NOT SOLD SEPARATELY)	14	892-254KJKCP	VACUUM BREAKER COVER w/SCREW
5	1-100XTJKNF	QUATURN CARTRIDGE (LH)	15	83-58NF	58" HOSE AND HANDLE ASSEMBLY
6	1-099XTJKNF	QUATURN CARTRIDGE (RH)	16	919-243JKNF	GASKET, .685 X .375 X .125
7	1-214JKCP	CAP	17	90-GNABCP	PRE-RINSE KETTLE FILLER VALVE
8	369-PRJKCP	LEVER HANDLE ASSEMBLY (PAIR)	18	E1JKABRCF	PLAIN OUTLET WITH SCREEN
9	633-023JKNF	INDEX BUTTON (RED)			
10	633-123JKNF	INDEX BUTTON (BLUE)			