

CHICAGO FAUCETS
a Geberit company

2100 South Clearwater Drive
Des Plaines, IL 60018
Phone: 847-803-5000
Fax: 847-803-5454
www.chicagofaucets.com

REPAIR PARTS

FITTING NO.

200-AGN8AE3-317VPHCP

SUBMITTED MODEL NO.

BY: JAR

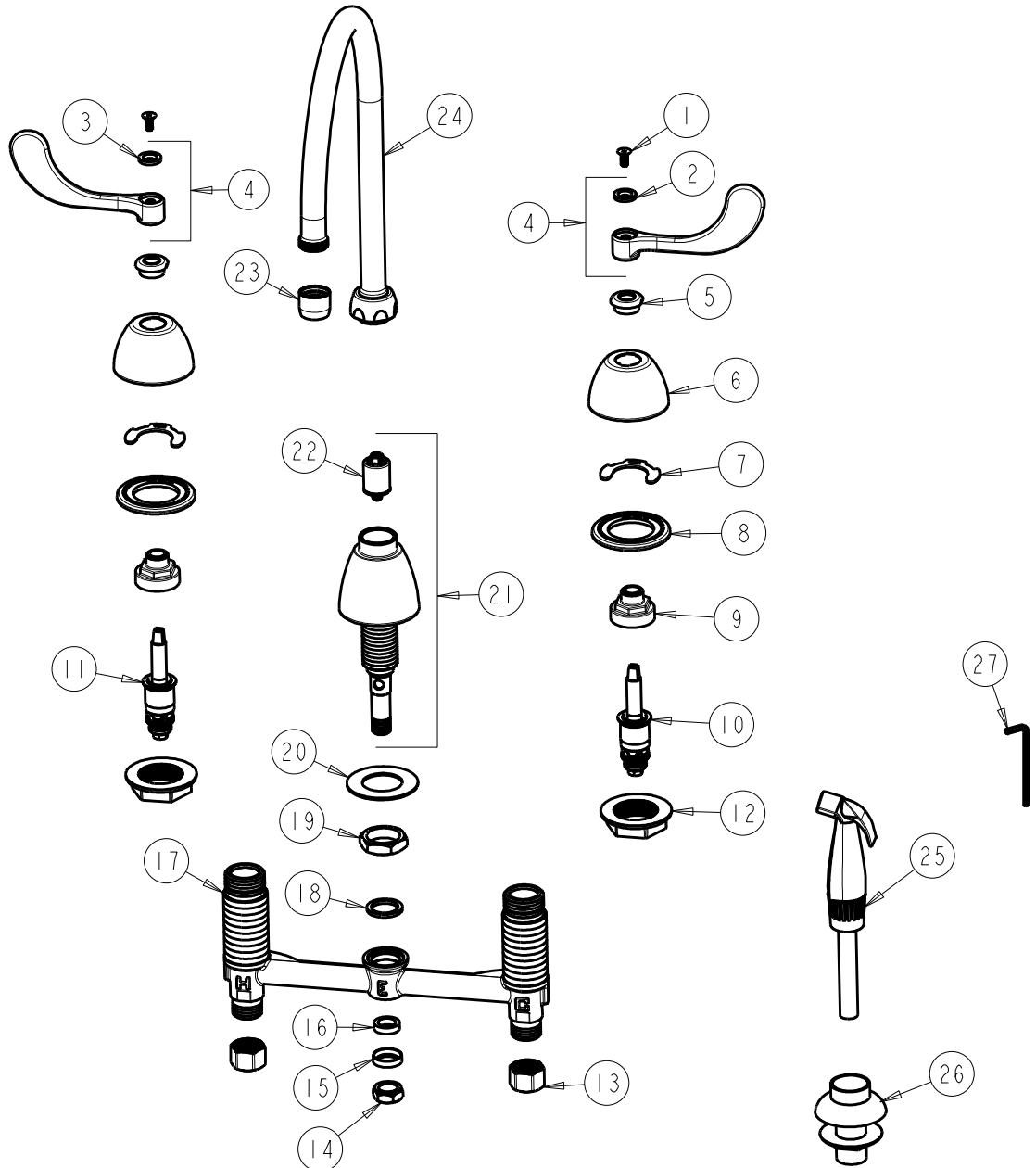
DATE: 08-27-01

ITEM NO.

CHK:

REV: 07-12-11

FOR TECHNICAL ASSISTANCE
1-800-TEC-TRUE (1-800-832-8783)



ITEM	PART NO.	DESCRIPTION	ITEM	PART NO.	DESCRIPTION
1	420-020JKNF	SCREW, 1/8 FLAT HEX HEAD X 1/2	15	250-087JKRBF	RETAINER
2	633-123JKNF	INDEX BUTTON (BLUE)	16	1797-029JKNF	RUBBER WASHER
3	633-023JKNF	INDEX BUTTON (RED)	17	---	BODY, VALVE
4	317-PRJKCP	HANDLE, 4" WRISTBLADE (PAIR)	18	250-200JKNF	GASKET
5	422-113JKCP	ESCUTCHEON NUT	19	250-054JKRBF	LOCKNUT
6	250-082JKCP	ESCUTCHEON	20	50-014JKNF	STEEL WASHER
7	200-009JKNF	CLIP, RETAIN	21	785-203KJKCP	SIDE SPRAY SPOUT BASE ASSEMBLY
8	888-026JKNF	WASHER, SEALING	22	1103-006JKNF	DIVERTER VALVE
9	274-014JKRBF	NUT, CAP	23	E3JKCP	SOFTFLO AERATOR
10	377-XTRHJKNF	RH QUATURN CARTRIDGE	24	GN8AJKCP	FOR PARTS SEE GN8AJKCP
11	377-XTLHJKNF	LH QUATURN CARTRIDGE	25	1103-009KJKNF	HOSE ASSEMBLY
12	250-004JKNF	LOCKNUT	26	1103-014KJKNF	FLANGE ASSEMBLY (BLACK)
13	49-005JKRBF	COUPLING NUT	27	420-022JKNF	VANDAL PROOF WRENCH, 1/8 HEX
14	689-013JKRBF	LOCKNUT FOR LAVATORY FITTINGS			