

CHICAGO FAUCETS.

2100 South Clearwater Drive
Des Plaines, IL 60018
Phone: 847-803-5000
Fax: 847-803-5454
www.chicagofaucets.com

Geberit Group

FOR TECHNICAL ASSISTANCE
1-800-TEC-TRUE (1-800-832-8783)

REPAIR PARTS

BY: JAR DATE: 11-11-03

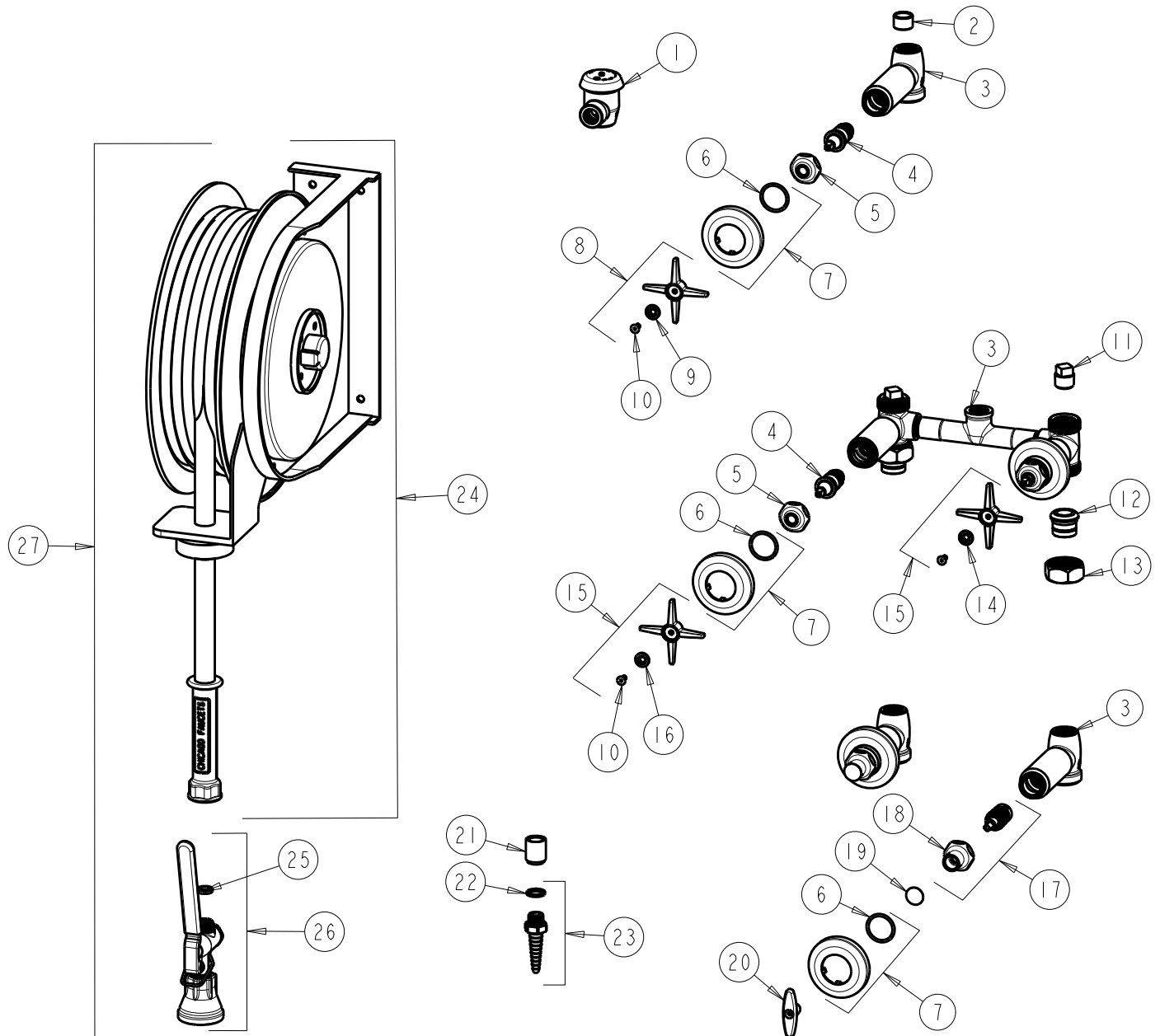
CHK: *JAR* REV: 03-13-23

FITTING NO.

536-NF

SUBMITTED MODEL NO.

ITEM NO.



ITEM	PART NO.	DESCRIPTION	ITEM	PART NO.	DESCRIPTION
1	893-ABCP	FOR PARTS SEE 893	15	633-PRJKCP	4-ARM HANDLE ASSEMBLY
2	-----	BUSHING	16	633-023JKNF	INDEX BUTTON (RED)
3	-----	VALVE BODY (NOT SODL SEPARATELY)	17	376-CXJKABNF	SLO-COMP INTEGRAL CHECK UNIT
4	217-XTLHJKABNF	CARTRIDGE, SLO-COMPRESSION (LH)	18	1-246JKCP	NUT, CAP LOOSE KEY 1-1/8-18 UNEF
5	1-214JKCP	CAP	19	1-144JKCP	BUTTON
6	5235-107JKNF	O-RING	20	293-006JKRCF	TEE HANDLE (INCLUDES SCREW)
7	633-201JKCP	FLANGE & O-RING	21	777-026JKCP	COUPLING
8	633-PLJKCP	4-ARM CROSS HANDLE	22	229-003JKABNF	WASHER
9	633-223JKNF	INDEX BUTTON (WHITE)	23	E7FCJKCP	NOZZLE
10	420-020JKNF	SCREW, 1/8 FLAT HEX HEAD X 1/2	24	537-LEONF	HOSE REEL, RETRACT
11	234-032JKABRCF	1/2 NPT PLUG	25	200-010JKABNF	GASKET
12	177-003JKABRBF	UNION TAILPIECE	26	90-HABCP	SPRAY, FOR PARTS SEE 90-HABCP
13	177-002JKCP	UNION NUT	27	537-NF	HOSE REEL
14	633-123JKNF	INDEX BUTTON (BLUE)			