

CHICAGO FAUCETS.

2100 South Clearwater Drive
Des Plaines, IL 60018
Phone: 847-803-5000
Fax: 847-803-5454
www.chicagofaucets.com

Geberit Group

FOR TECHNICAL ASSISTANCE
1-800-TEC-TRUE (1-800-832-8783)

REPAIR PARTS

BY: JAR DATE: 10-25-00

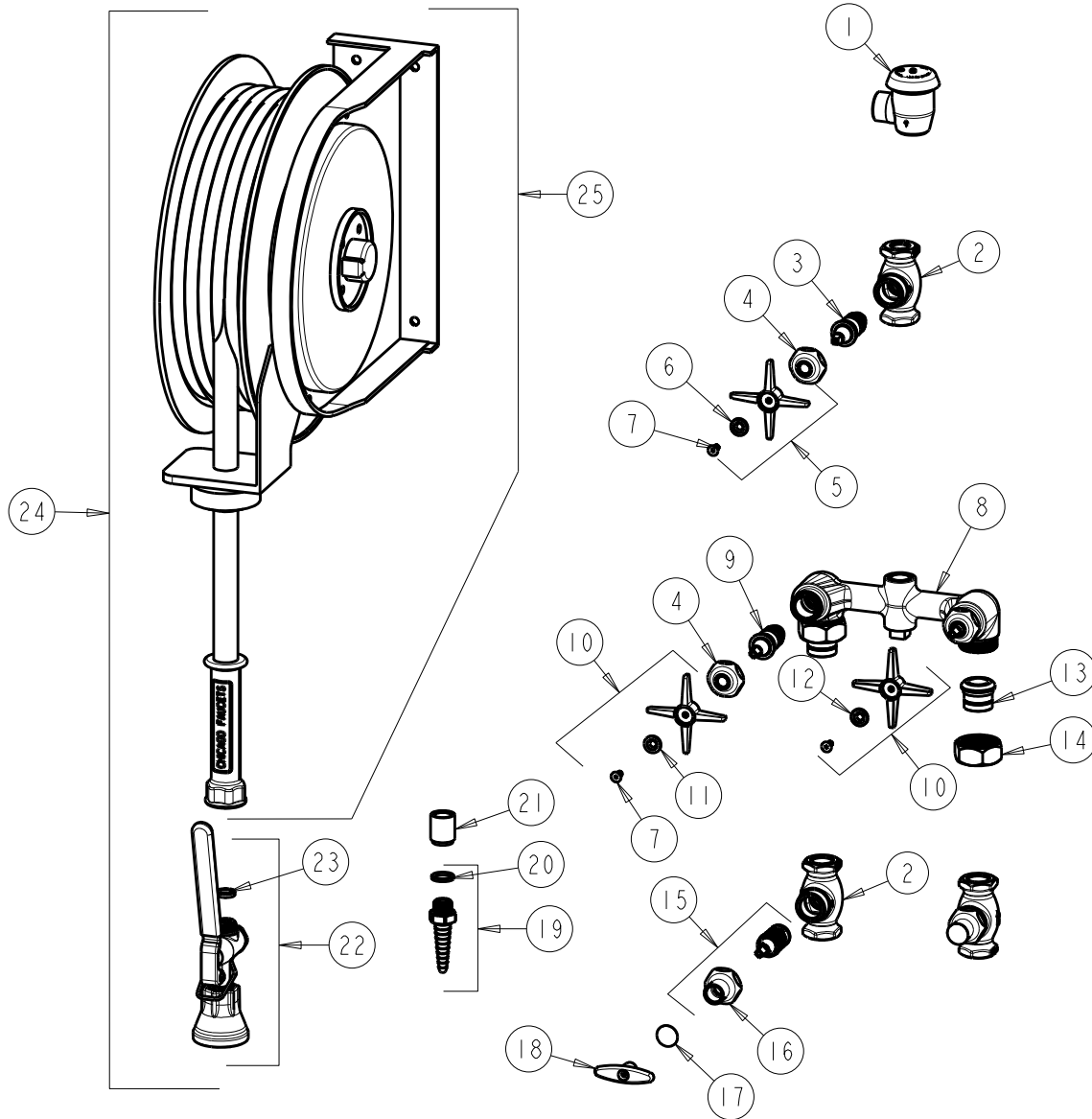
CHK: *gnd* REV: 03-13-23

FITTING NO.

535-NF

SUBMITTED MODEL NO.

ITEM NO.



ITEM	PART NO.	DESCRIPTION	ITEM	PART NO.	DESCRIPTION
1	893-ABCP	FOR PARTS SEE 893	14	177-002JKCP	UNION NUT
2	-----	BODY (NOT SOLD SEPARATELY)	15	376-CXJKABNF	SLO-COMP INTEGRAL CHECK UNIT
3	217-XTLHJKABNF	CARTRIDGE, SLO-COMPRESSION (LH)	16	1-246JKCP	NUT, CAP LOOSE KEY 1-1/8-18 UNEF
4	1-214JKCP	CAP	17	1-144JKCP	BUTTON
5	633-PLJKCP	4-ARM CROSS HANDLE	18	293-006JKRCF	TEE HANDLE (INCLUDES SCREW)
6	633-223JKNF	INDEX BUTTON (WHITE)	19	E7FCJKCP	NOZZLE W/ .7 GPM FLOW CONTROL
7	420-020JKNF	SCREW, 1/8 FLAT HEX HEAD X 1/2	20	229-003JKABNF	WASHER
8	-----	VALVE BODY	21	777-026JKCP	COUPLING
9	1-100XTJKABNF	QUATURN CARTRIDGE (LH)	22	90-HABCP	SPRAY, FOR PARTS SEE 90-HABCP
10	633-PRJKCP	4-ARM HANDLE ASSEMBLY	23	200-010JKABNF	GASKET
11	633-023JKNF	INDEX BUTTON (RED)	24	537-NF	HOSE REEL
12	633-123JKNF	INDEX BUTTON (BLUE)	25	537-LEONF	HOSE REEL, RETRACT
13	177-003JKABCP	UNION TAILPIECE			